

selux

H I G H  
L I G H T S

VOL. 25



## Elegantly lighting unique outdoor spaces

VAZ transforms outdoor spaces with durable, natural materials and efficient illumination. A modern bollard for architects and designers to incorporate into their most notable and distinguished designs, enhancing the space through effective lighting distributions, and bringing sophistication and interest to outdoor areas.

**Series**  
Bollard  
SteelCore Bollard

**Light Engine**  
High Output 364 - 1473lm  
Standard Output 189 - 765lm  
1 - 4 Quadrants

**CCT/CRI**  
Amber  
2700K  
3000K  
3500K  
4000K  
5000K  
80CRI minimum

**Materials**  
Aluminum Head  
**Bases in:**  
Aluminum  
SteelCore  
Marble  
Travertine  
Glazed Porcelain

**Options**  
Speaker  
Surge Protection  
GFCI Receptacles  
Custom Colors

**Declare.**

IP65

IK10

Meets DarkSky Requirements

## COLORS AND MATERIALS:

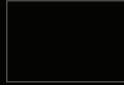
### Aluminum:



White



Black



Semi-Matte

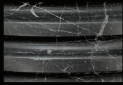


Silver



Bronze

### Stone:



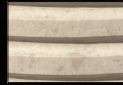
Turkish  
Marquina  
(Black Marble)



Carrara  
White  
(White Marble)

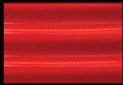


Grey  
Travertine

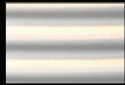


Natural  
Travertine

### Porcelain:



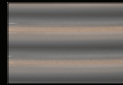
Red



White



Black



Grey

# Materiality creates an interesting and enduring product

Through the use of various natural materials, VAZ brings beauty to the built world. From standard aluminum to mined travertine or marble to formed porcelain, the design of the bollard is carried throughout the offering, creating a cohesiveness within a project but also an homage to nature.

### Aluminum

Offering a smooth, unassuming yet striking form, the aluminum version of VAZ is an economic way to bring smooth lines and powerful lighting into your design.

### Stone

Travertine or Marble bases, matched with a durable aluminum head, provide not just a solid product, but one that evokes feelings of genuine beauty. Natural variations throughout stones form an awe-inspiring visual impact by creating a unique experience with each product.

### Porcelain

Formed and glazed to ensure smooth beautiful curves, the porcelain base is matched with the pleasing curvature of the aluminum head to bring the design intent through the entire product. Glossy or Matte finishes are achievable, with a variety of colors to meet any designed space.

## Diverse not just in material, but also stature

Adaptable for every application, size differences allow VAZ to integrate seamlessly with site furnishing plans. Designed specifically to coincide with typical furniture heights and to have full cutoff lighting, this bollard can be used throughout outdoor spaces without worry of interference of form or function.

**18" - stool height** - use the shortest VAZ when space is a premium and there are designated seating areas in your design.

**30" - table height** - not to overtake the space when occupants are sitting at tables, this height allows for efficient and uniform lighting throughout the setting.

**42" - bar height** - bring height into your design by using the tallest VAZ, elevating not just the sight line but also the entire project.

**42" SteelCore** - with its unique form, the SteelCore VAZ allows the entire area to have common lighting without being overbearing.



Novel materials that  
**transform outdoor spaces**



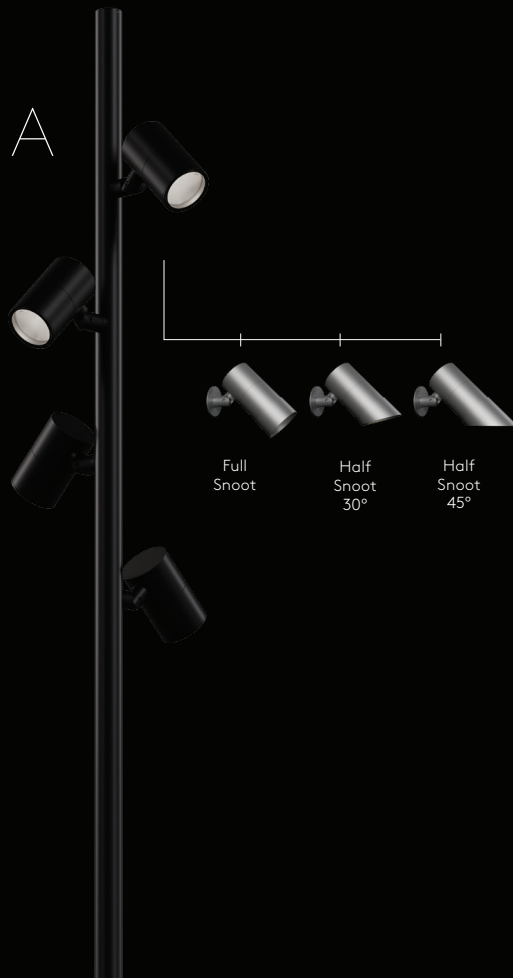




# MELLI™ SISTEMA

A **sophisticated**  
**luminaire** range that is  
expressive and attractive

Melli Sistema adds another level of flexibility to the family. By offering an adjustable mounting point on a pole or wall, Melli can now be aimed in a variety of directions, including +/-90° tilt and xxx swivel. Keyed in adjustment marks allow for precise aiming, while a range of snoots and a honeycomb louver expand the performance range.



**Mounting**  
Sistema Pole  
Sistema Wall

**Optics**

COB Spot  
9° Spot  
20° Spot  
40° Flood  
80° Flood

1672 - 3847lm per fixture

**CCT**

2700K  
3000K  
3500K  
4000K  
5000K

80CRI minimum

**Options**

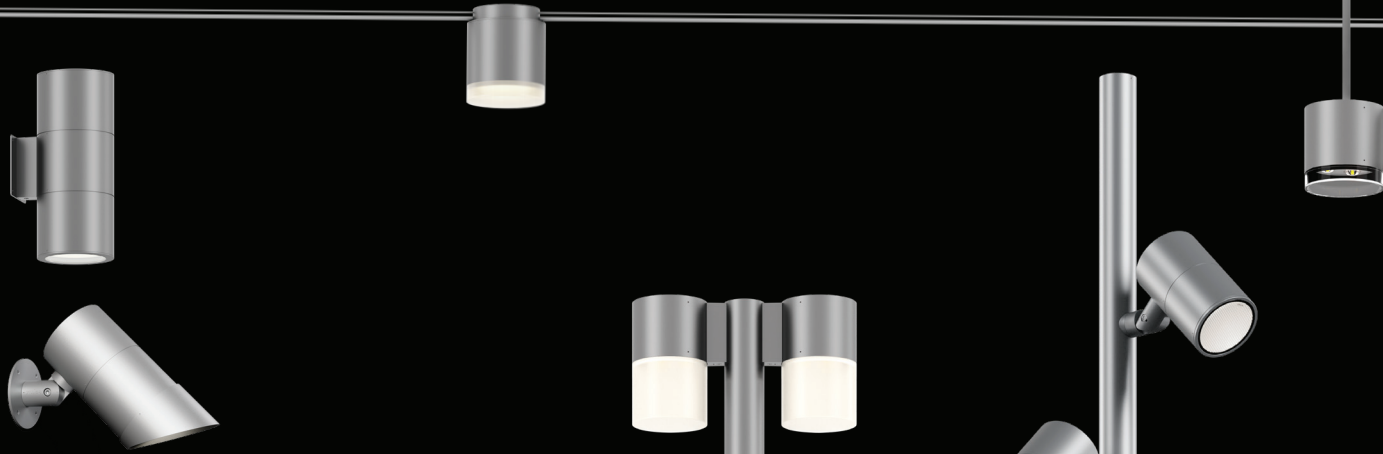
DALI-2  
Honeycomb Louver  
Spread Lens  
Full Snoot  
Half Snoot - 30° or 45°

**Declare.**

IP67

IK07





**A family of luminaires**  
with tailored options

Melli™ is a versatile family of luminaires offering a wide array of optical and mounting options, allowing for endless customization possibilities. The Melli range excels at illuminating spaces such as plazas, shopping centers, schools, pedestrian areas, or facades.





A Y A

Form follows  
**Magic**

When form meets function, when something new and unprecedented breaks ground, we are fascinated by symbiosis; that's magic.

With Aya, we use the latest scientific findings to provide a solution for ecological environments. We reinterpret the balance between humans, nature, design, and functionality to create light for generations. Aya integrates all the functions for future-oriented luminaires and fulfills requirements for sustainable lighting while emphasizing the natural beauty of urban spaces.



**Mounting**  
Post Top

**Optics**  
Symmetric  
Asymmetric

**Output**  
High Output - 5700lm  
Low Output - 2850lm

**CCT/CRI**  
Biological Red  
2700K  
3000K  
3500K  
4000K  
5000K  
80+ CRI

**Options**  
DALI-2  
NEMA Socket  
Motion Sensor  
Decorative Base Covers

---

IP65  
IK07  
Meets DarkSky Requirements

## Minimum resources. Maximum integration.

Everything that doesn't work or is unnecessary is filtered out by nature. Following this maxim, Aya's form emerged from its function – with minimal use of materials to conserve resources. The silhouette seamlessly integrates into urban and natural spaces thanks to its soft contours.

### **Self-cleaning through rainwater – following nature's example.**

The organic form allows rainwater to float across the entire luminaire housing, from top to bottom. This not only helps clean the luminaire but also improves the maintenance efficiency of the luminaire.

### **Designed to protect the night sky.**

Aya meets DarkSky requirements and helps preserve the night sky by reducing light pollution. The combination of deep-set optics together with precise light distributions help maximize light utility while avoiding light pollution.

### **Biological Red lighting combines safety and biodiversity.**

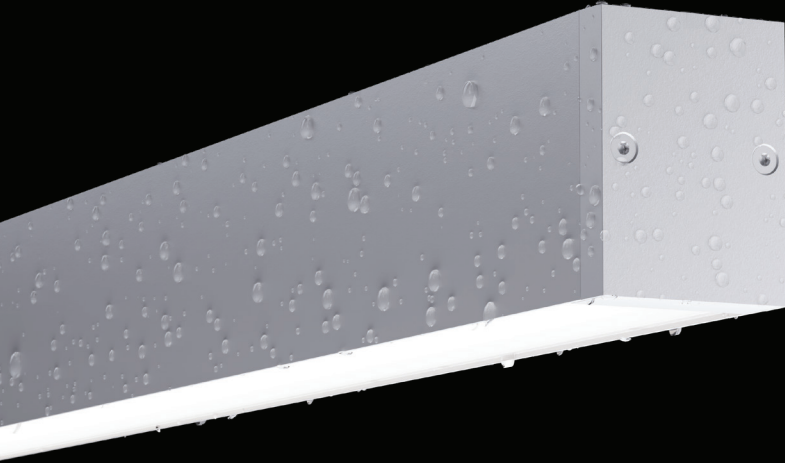
For areas particularly sensitive to lighting, the Biological Red light takes the activities of a large proportion of insects into account and allows for changes in the light color between the red spectrum and 2700K depending on their activity in the relevant months. The light intensity can also adapt to the natural rhythms of insects and biodiversity through a commissioned control system.







P E E T A



## Lines of Light that Endure

Upholding the known quality standards of Selux linear fixtures, Peeta goes to new lengths. A fully sealed luminaire that is able to achieve IP65, IK10, and 3G rating - now that's at a whole other level!

Designed to fully seal along the length of the tri-extruded lens and mechanically seal at the ends with unobtrusive hardware, Peeta brings with it strength, stability, and resilience to even the most challenging applications.

### Lighting

Direct

### Mounting

Recessed

Wall / Surface

Vertical / Horizontal Surface

Rigid Stem

Catenary

### CCT / CRI

2700K

3000K

3500K

4000K

80+ or 90+ CRI

### Output

330 - 1205lm/ft

### Shielding

LED Optimized White Lens

LMO Wall Washer

LMO Wall Grazer

Narrow Beam

Batwing

### Options

3G Rating

Runs

Unlit Corner Hubs

Emergency Circuit Wiring

Integral Cold-Weather

Emergency Battery Pack

### Declare.

Meets DarkSky Requirements

BA/BAA/BABAA Compliant

IP65

IK10







## Features and Benefits

---

Create pure lines of light with sealed luminaires up to 12', or join fixtures for Runs to create longer linear lighting.

---

Tested for many elements - BA / BAA / BABAA compliant, 3G Rating, IP65, IK10, Wet Locations.

---

---

Adjustable mounting points allow for specific placement during installation, creating additional flexibility.

---

Emergency lighting even in the cold provides safe lighting when the power goes out.

---



**Peeta is a versatile light suitable for many indoor and outdoor uses.**

It offers protected lighting for bathrooms, entrances,  
canopies, and courtyards.







## Catenary Mounting

Catenary installations often prove the ideal solution in high-traffic areas, spaces requiring minimal pole interruption, decorative or celebratory settings, courtyards, and walkways, among other applications.

Peeta, our inaugural linear catenary fixture, complements the Selux broader catenary product line, empowering you with extensive choice and design control for your project. Whether installed individually or daisy-chained, these fixtures provide flexible, welcoming illumination to suit your specific lighting needs.



selux.us

selux

5 Lumen Lane  
P.O. Box 1060  
Highland, NY 12528  
(800) 735-8927  
selux.us@selux.com

