



M E L
L I TM

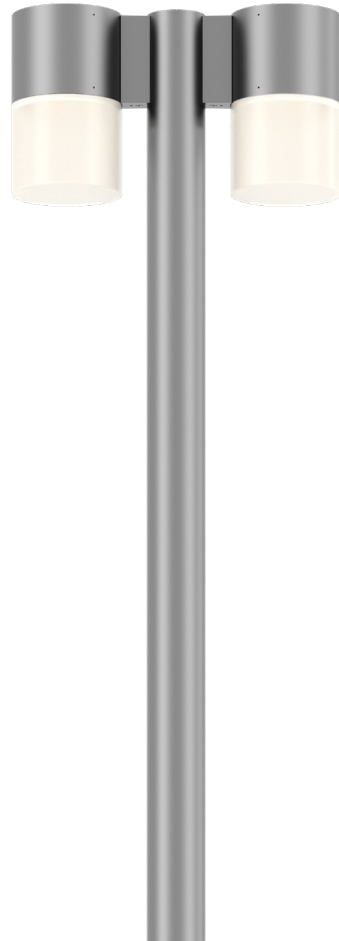
Application Guide

selux

Form

Melli

A sophisticated luminaire range with endless optical and mounting options



GEN5

DIFFUSE

SPOT



Typical Applications

Local Road

Pedestrian Path

Parking Lot

Dark Sky Area

Typical Applications

Plaza

Shopping Center

Pedestrian Path

Ambient Area

Typical Applications

Facade

Accent

Pedestrian Path

Dark Sky Area

A family of luminaires with tailored options

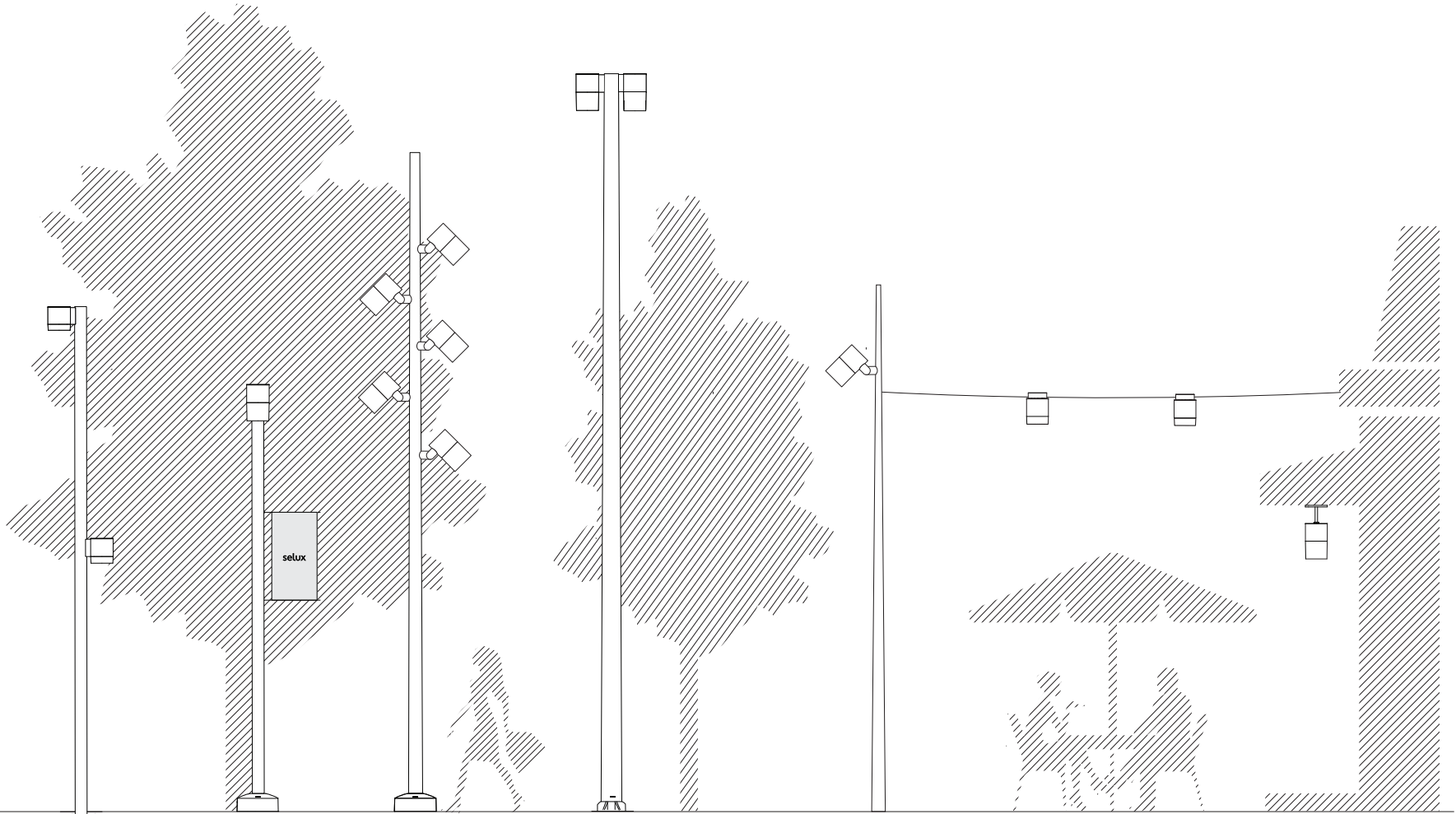
Melli is a medium scale architectural indoor/outdoor luminaire family that transforms for applications that require strict precise roadway lighting, soft diffuse light, or even focused spot distributions. With Melli, the same form factor is implemented throughout the entire family - mix and match optics with any of the various mounting types for an aesthetically cohesive design.

Award Winning Product



Family

20'
—
18'
—
16'
—
14'
—
12'
—
10'
—
8'
—
6'
—
4'
—
2'



Wall direct/indirect
Wall direct
Sistema Wall

Double pole
mounted
with buried base
(consult factory)

Single pole
mounted with
banner arm
(consult factory)

Sistema pole
mounted

Double pole
mounted

Sistema pole
mounted

Catenary

Exterior Stem

Melli is available with three different light engines, each with their own options

Gen5

Our proprietary Gen5 silicone optics provide a wide range of distributions for precise optical control and lower intensity angles. This optic is DarkSky approved at 3000K or warmer, and has the optional House Side Shield over each optic which enables shielding of the directional light. Choose from a short or long clear cylinder depending on the look you are going for.

Diffuse

Behind a diffuse lens is a mid-power light engine, creating an even, comfortably appearance and light distribution. Enhance the ambiance of your space with soft illumination from either the short or long diffuse cylinder.

Spot/COB

Add interest and drama to your lighting design with the Spot optics in Melli. The COB is seated behind one of four precise, specular reflectors, allowing different beams for different applications. Direct/Indirect for the Wall Mount can help create a visually interesting facade, or the Sistema mounting allows for aiming the light at specific areas or objects. When in the straight-down position, Melli Spot is DarkSky Approved in 3000K or warmer.

Gen5 Specifications

- Light Engine:** Gen5
- Distributions:** Type I · Type II · Type III · Type IV · Type V Round
- Cylinder:** Short Clear · Long Clear
- Output:** Up to 3,254lm · up to 116lm/W
- CCT:** 2700K · 3000K · 3500K · 4000K · 5000K
80CRI minimum
- Mounting:** Surface · Wall · Catenary · Rigid Stem · Single Pole Mount · Double Pole Mount
- Options:** House Side Shield



Standard Gen5 Distributions:



House Side Shield Distribution:



* Type I with house side shield shown - available with Type I, II, III, and IV.



DarkSky Approved

IP65

IK10

Gen5

is an optical advancement

An optical advancement that allows for a full range of distributions with excellent visual comfort, Gen5 is a proprietary design made of silicone, integrated into Melli to expand distribution options, increase lumen output, and provide a visual experience unique to Selux.

By keeping the vertical maximum intensity angle below 69°, Gen5 optics minimize brightness at critical viewing angles, and spreads brightness between the LEDs, reducing contrast and increasing visual comfort.

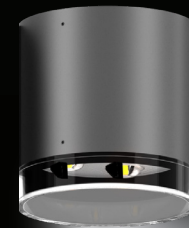


Gen5

House Side Shield

blocks light at the source

Instead of the typical house side shield that obstructs the look of the luminaire as well as interrupting the flow of a lighting design, Selux has created an exclusive discrete house side shield that clips directly to the Gen5 optic, blocking light at the source. House side shield is only available with Type I, II, III, and IV.



Gen5
with House-Side Shield

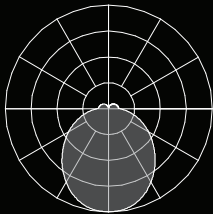
Diffuse

Diffuse Specifications

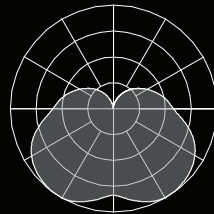
Light Engine:	Diffuse
Cylinder:	Short Diffuse · Long Diffuse
Output:	Up to 4,703lm · up to 136lm/W
CCT:	2700K · 3000K · 3500K · 4000K · 5000K · 80CRI minimum
Mounting:	Surface · Wall · Catenary · Rigid Stem · Single Pole Mount · Double Pole Mount



Short Diffuse



Long Diffuse



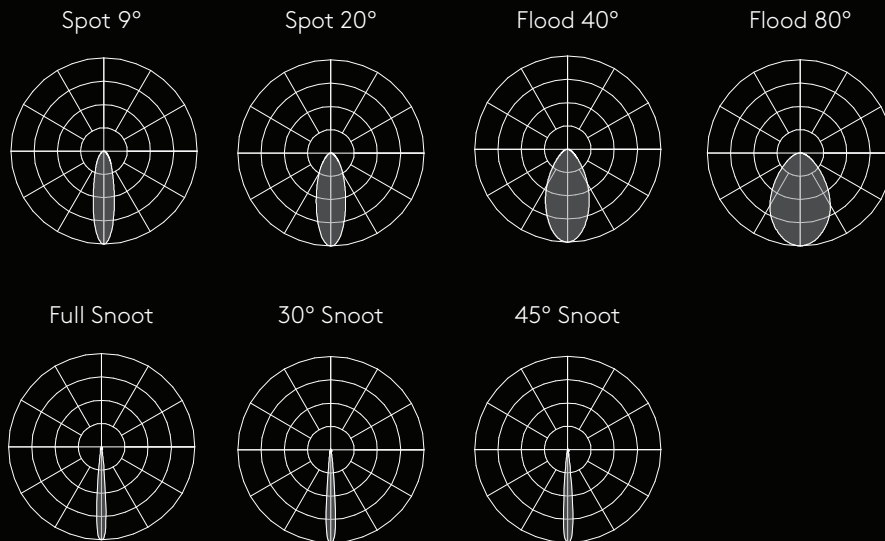
IP65

IK10

Spot

Spot Specifications

- Light Engine:** Spot
- Optics:** Spot 9° · Spot 20° · Flood 40° · Flood 80°
- Output:** Up to 2,908lm · Up to 89lm/W
- CCT:** 2700K · 3000K · 3500K · 4000K · 5000K
80CRI Minimum
- Mounting:** Surface · Wall (Direct or Direct/Indirect) · Catenary ·
Rigid Stem · Single Pole Mount · Double Pole Mount
· Sistema Pole Mount · Sistema Wall Mount
- Options:** Honeycomb Louver · Spread Lens · Color Filter
· Snoots - Full, 30°, 45° (Sistema only)

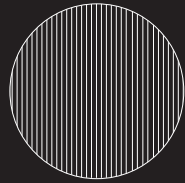


DarkSky Approved

IP65

IK07

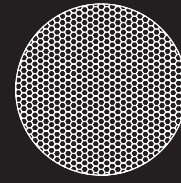
Two lighting solutions designed to enhance Melli Spot



Linear Spread Lens



The Linear Spread Lens creates either a Horizontal or Vertical distribution of the light, and is field-rotatable, allowing for complete control over light manipulation.



Honeycomb Louver



The Honeycomb Louver reduces glare without adding length to the luminaire, while hiding the source of light through its sleek design.

Melli Snoots

help enhance the level of control over your light

FULL SNOOT



Provides beam control and reduces glare on the luminaire - tightens the beam and creates a crisp cutoff.

30° SNOOT



Ideal for a more ambient lighting, reduces glare from the luminaire and creates a feathered cutoff.

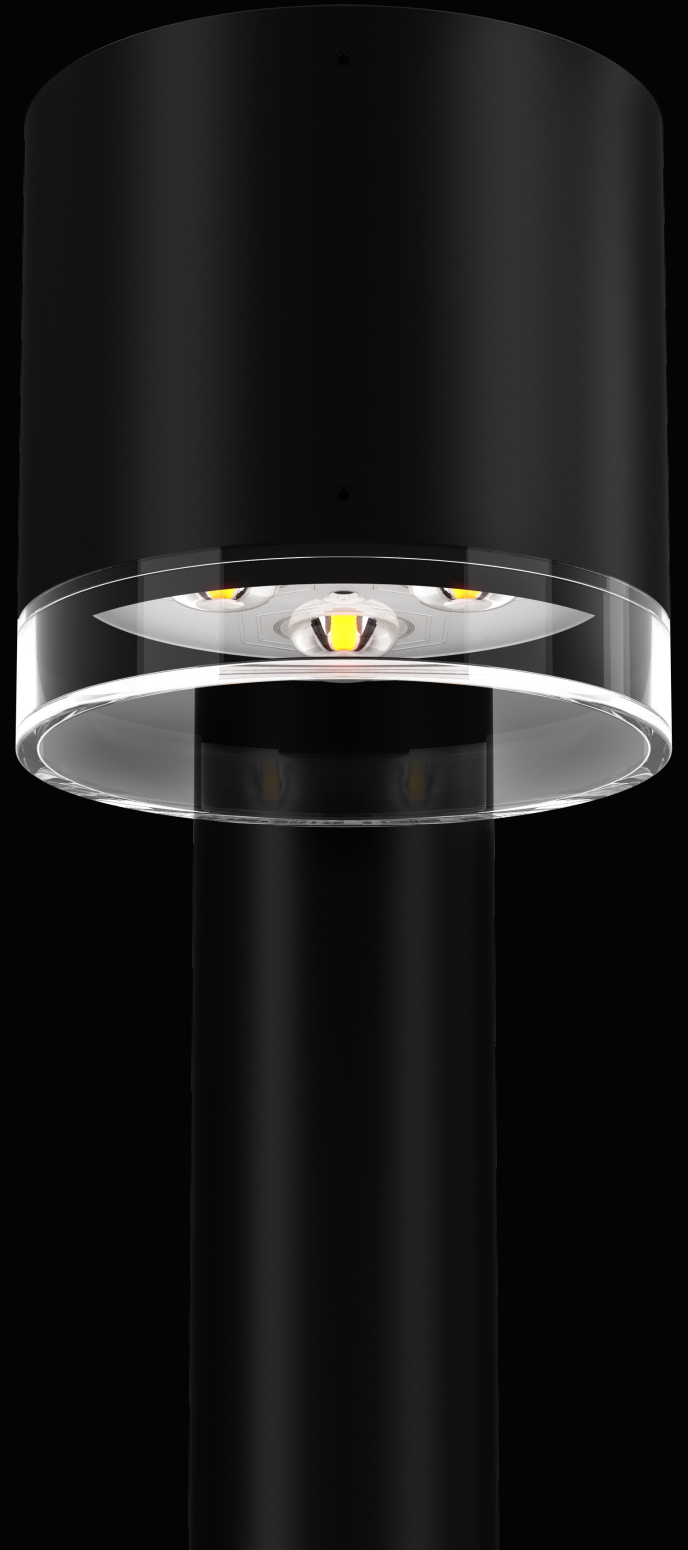
45° SNOOT



Also for ambient lighting, reduces glare from the luminaire more than the 30° and creates a feathered cutoff.



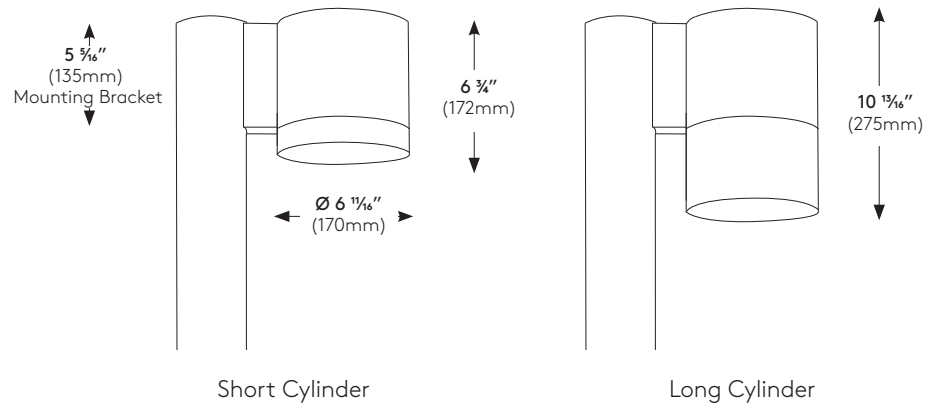
P O L E
M O U N T



Creative opportunities are abundant, with so many possible configurations

Melli attaches to round poles with a threaded insert - this method allows luminaires to be placed almost anywhere on a pole. Single or Double standard mounting allows you to double your light without doubling the number of poles needed.

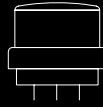
On a project-specific basis, Melli could have two or more luminaires at different heights, which would allow for illuminating a road or parking area as well as a sidewalk from the other side of the same pole. This allows you to create even more unique lighting solutions without adding multiple poles.





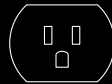
Pole Options

(for use with Pole or Sistema Pole fixtures)



Photocell

The twist-lock photocell conserves energy and improves safety and security by automatically turning lights on when it gets dark. It also saves on energy by turning off at dawn when extra light is unnecessary.



GFCI

The outdoor GFCI duplex receptacle is intended for portable tools and equipment when attended by personnel. It is weatherproof with its self-closing cover - for use with or without padlock.



USB & Duplex Receptacle

The outdoor GFCI receptacle with USB charging port is intended for portable tools and equipment when attended by personnel. The USB charging port allows convenient charging of smart phones or other low voltage electronics.

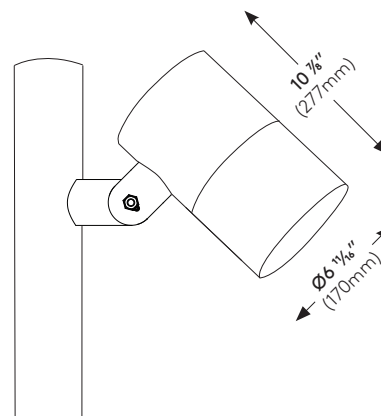
S I S T E M A
M O U N T



Customizing light direction and intensity

to enhance any
setting's ambiance.

Melli Sistema has an adjustable mounting that allows for 360° and 90° tilt. Combining the rotation with the tilt provides +/- 90° range for precise orientation of the luminaire head, adding a great deal of creative freedom. Luminaire heads can be arranged single or staggered at various heights around a pole. With the options of a Full Snoot, 30° Snoot, 45° Snoot, and Honeycomb Louver, Melli Sistema offers a range of beam control and design opportunities.

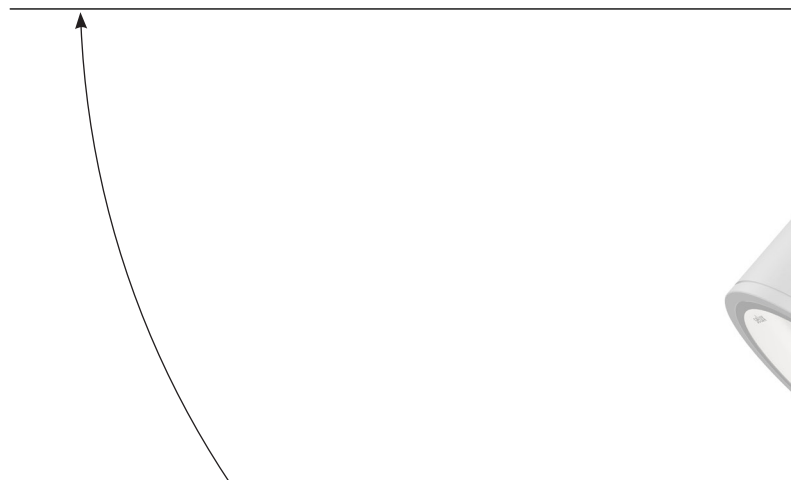


Sistema Pole

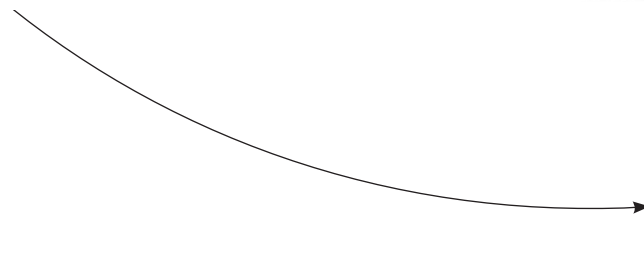
TILT

Melli Sistema has an adjustable mounting that allows for 360° rotation and 90° tilt. Combining the rotation with the tilt provides +/- 90° range for precise orientation.

Embedded hash marks on the adjustable arm provide an easy visual for aiming and aligning fixtures.

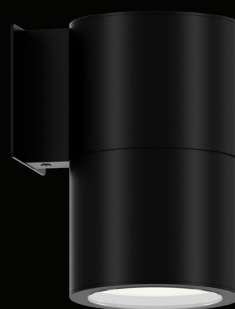


90°
Tilt Range





W A L L
S U R F A C E
S T E M
S I S T E M A



Emphasizing architectural detail with an elegant, contemporary look

Melli Wall, Surface, Stem, and Sistema, luminaires are most commonly for use along building facades and overhangs to provide visual guidance for pathways, identify doorways, and brighten entrances.

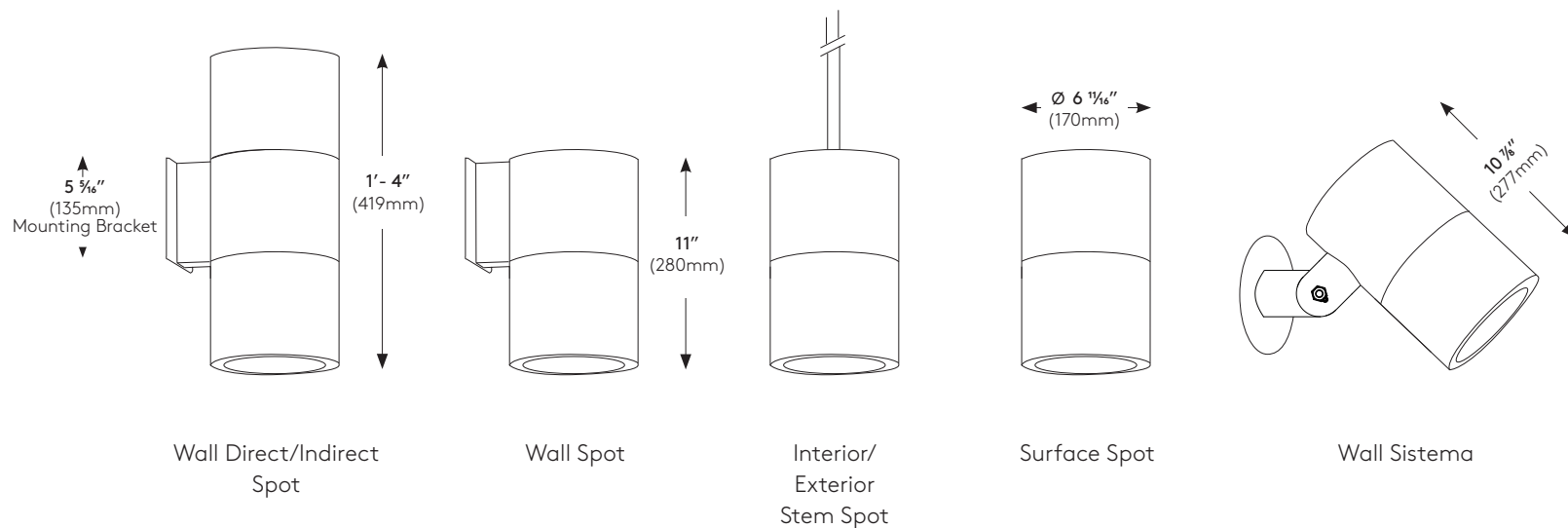
Wall Mount fixtures are available in two styles - Direct or Direct/Indirect - and can be used for ambient lighting to enhance aesthetic appeal. Use Melli Wall Mount to create a mood or make dramatic accent lighting effects for beautiful facade lighting.

Melli Stem, or Surface Mounts suspend from ceilings or exterior canopies to provide illumination for interior or exterior entranceways.

Melli Wall can be placed strategically along the sides of a building, around a dark corner, or in a narrow space to brighten or highlight walkways and paths.

Melli Sistema provides a range of beam angles creating a versatile addition to any space.

Melli can also be used as an interior light perfect for task lighting and creating a better lit area around those spaces that need a little bit of extra light. Melli can also be Wall, Surface, or Catenary mounted in interior spaces and can be used in offices, hospitality, foyers, and entryways.









RECEPTION



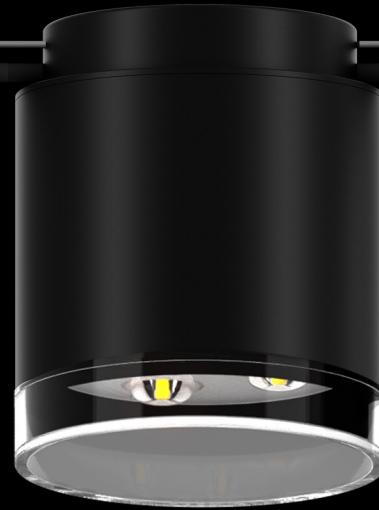
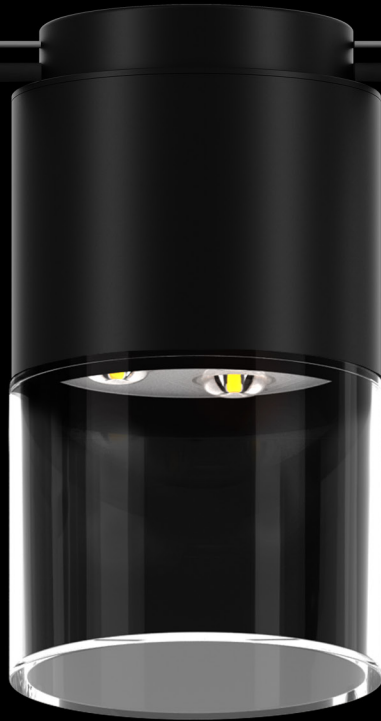


C A T E N A R Y



Melli Catenary with
Diffuse Long Cylinder

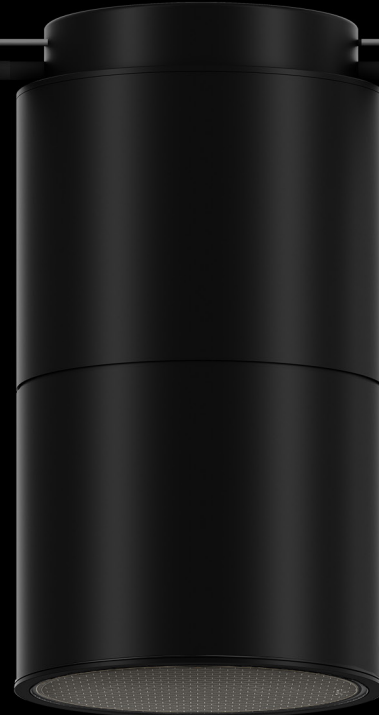
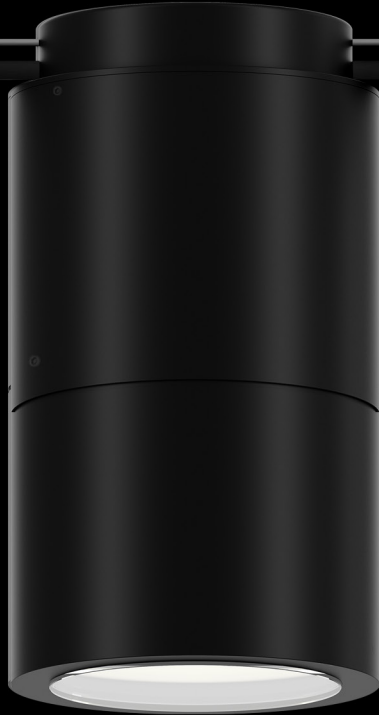
Melli Catenary with
Diffuse Short Cylinder



Melli Catenary Gen5
Clear Long Cylinder

Melli Catenary Gen5
Clear Short Cylinder

Melli™ Catenary Spot



Certified by DarkSky.org

Melli Catenary
Spot

Melli Catenary Spot
with Honeycomb Louver

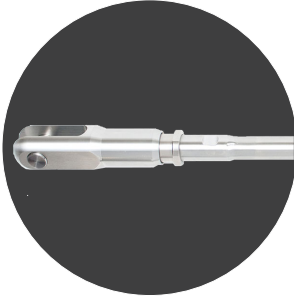


What Can Selux Provide?

Selux can offer the complete solution. By submitting a completed Catenary Design Guide Form, Selux will build a catenary package fully engineered with supporting poles, cables, cords, and luminaires. Anchoring catenary systems to buildings or structures not provided by Selux will have to be evaluated by the on-site Professional Engineer (PE).

Catenary suspended luminaires require additional materials for proper installation of the lighting system. These additional materials include structural tension cable

for luminaire suspension, fittings for attachment to the building structure or structural masts/poles, and cable ends. Stainless steel is recommended due to its resistance to corrosion, strength, long life, and aesthetic appearance. Reference the luminaire weight and EPA on product specification sheet.



Clevis Assembly & Adjustable Turnbuckles

Manual adjustment is provided by rotating the adjusting sleeve.

Stainless Steel Structural Tension Cable

Offers the best combination of strength and stiffness for static structures. As spans and loads increase, the cables get larger in diameter (the number of strands increases).



Poles & Anchor Points

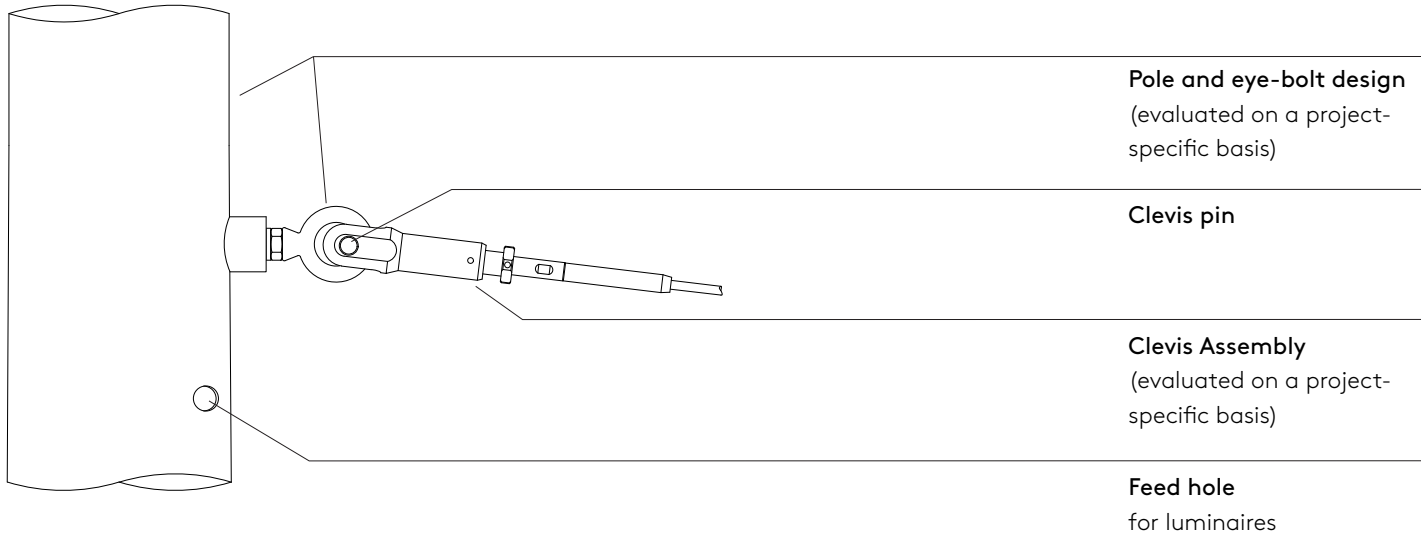
Selux can provide mounting points for poles or anchored brackets to buildings or structures. Selux can provide calculations and size the poles appropriately on a project-specific basis. Brackets to structure must be evaluated by on-site PE.

Professional Engineer Stamped Drawings

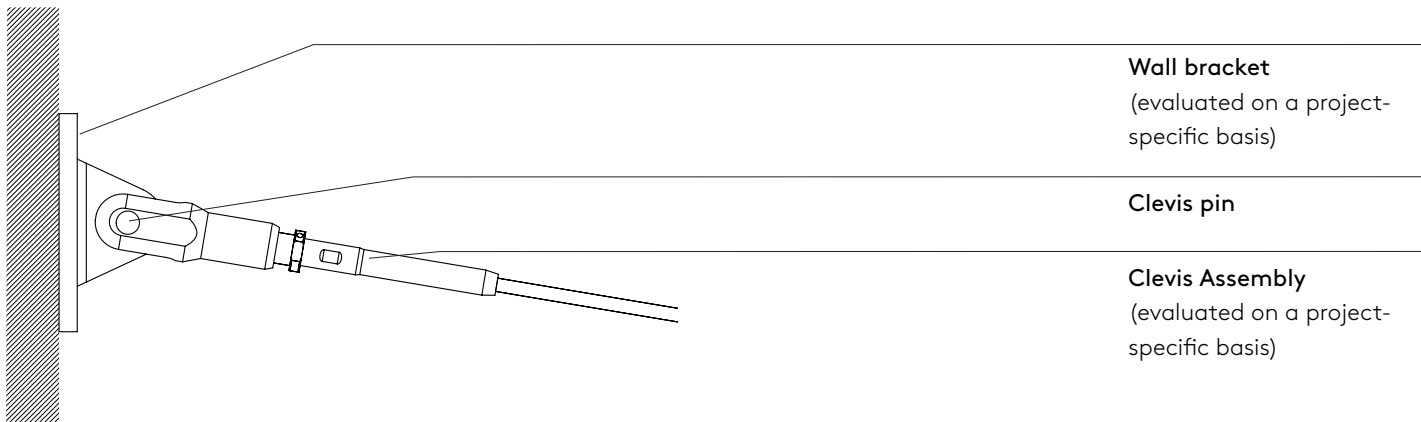
Selux can provide stamped drawings (if required) for a fee. It is important to identify this at the early stages of the project so the cost can be included in the budget. Stamped drawings may extend the lead time.



Example Pole Anchor Detail



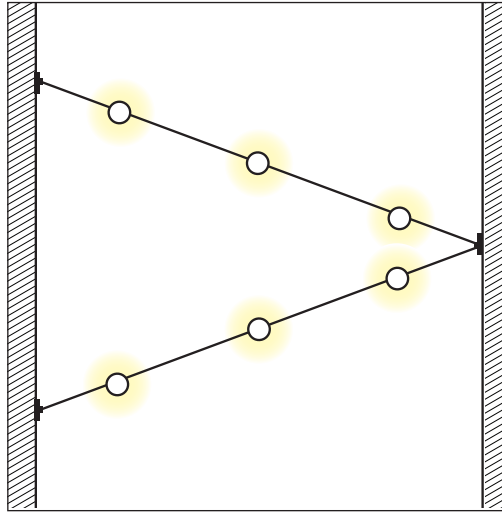
Example Wall Anchor Detail



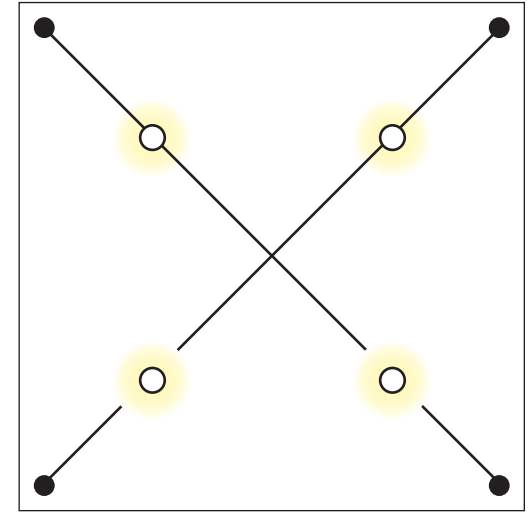
Freedom of design

Catenary design examples shown here are only a few of the many possibilities you have. Consult with Selux to bring your unique catenary ideas to life.

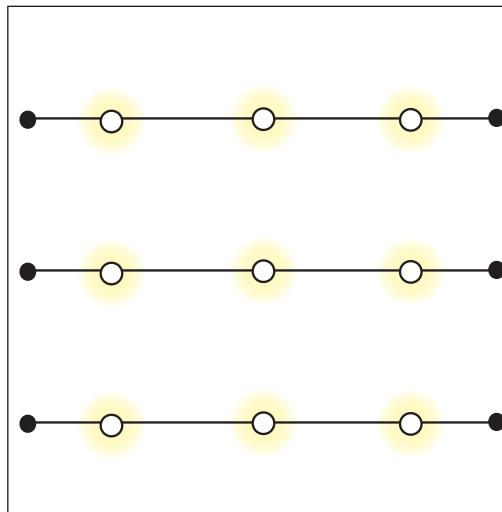
Building-to-Building



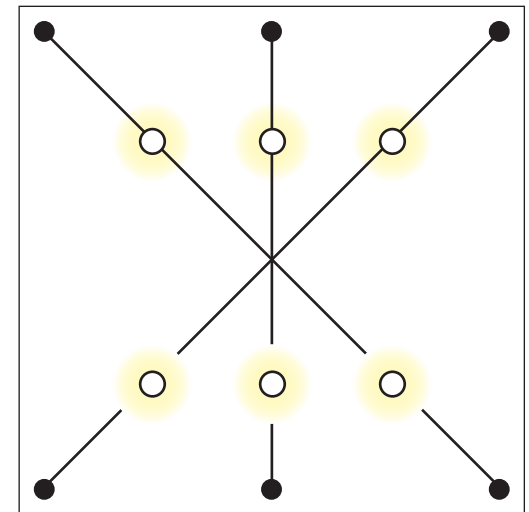
Pole-to-Pole X-Configuration



Pole-to-Pole or Building Linear Configuration



Pole-to-Pole Space Configuration



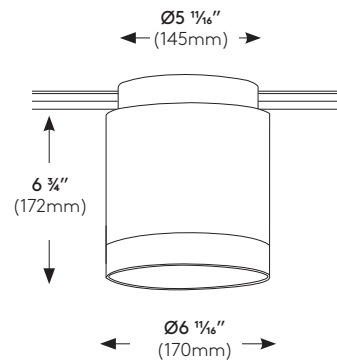
Purposeful light and shadow, create mood and drama

When using catenary, Melli can be installed just about anywhere that people gather. Not only does it light up the space, but it improves visibility and safety. Melli catenary can be used in outdoor retail areas, public parks and squares, outdoor theaters, or festival sites. Even consider interior spaces that could be amplified with a creative catenary installation!

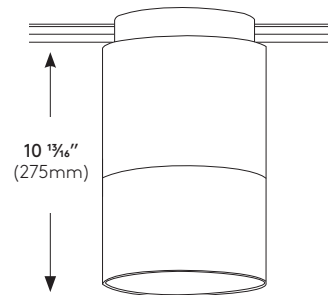
No obtrusive poles means that people can feel free to move around and utilize the beautiful space. The cables used

in the Melli Catenary system allow for long spans while supporting the weight of the luminaires you need to cover your area. The cables are usually anchored to buildings, walls, or poles.

With Melli Catenary, you have complete freedom to design the project the way you want and to create the mood or ambiance your space calls for.



Catenary
Short Cylinder shown

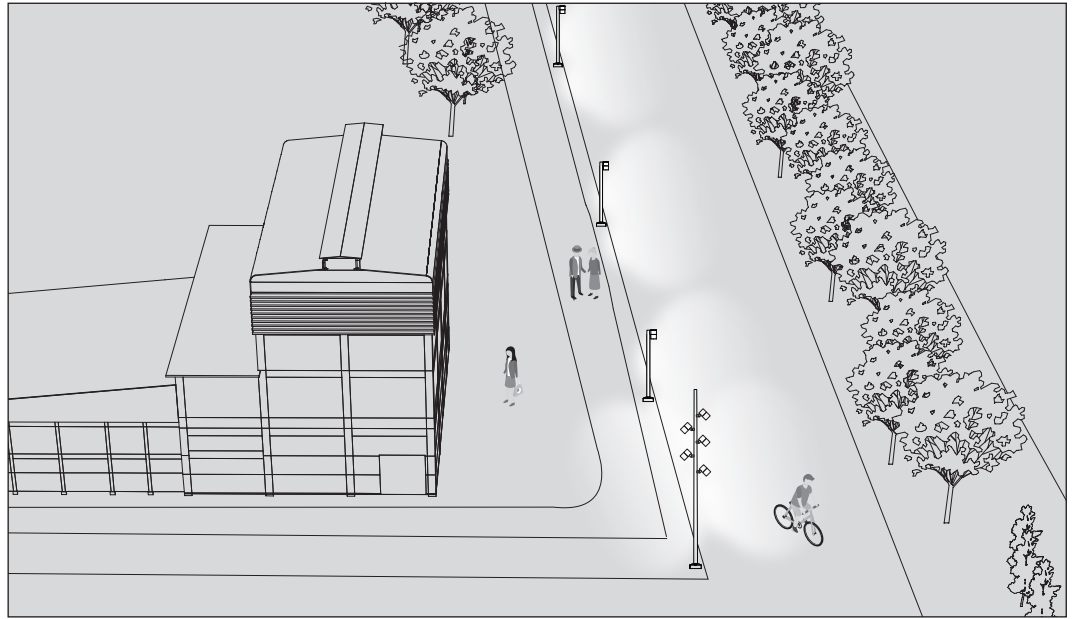


Catenary
Long Cylinder shown



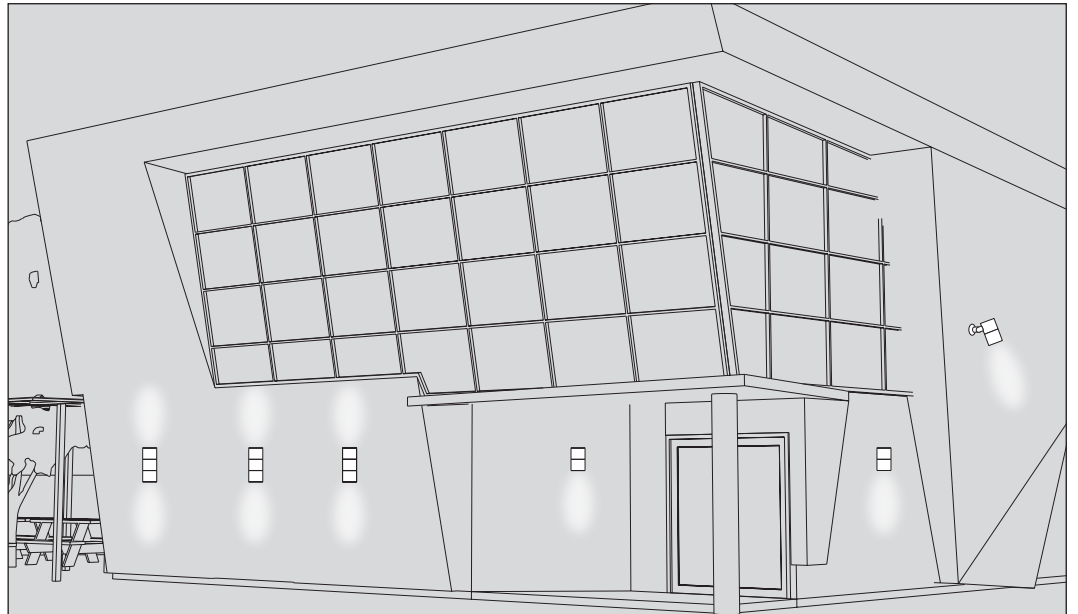
Pedestrian Pathway

Use Melli pole mount to increase security in retail locations or suburban neighborhoods while encouraging people to meet and build community. Use a variety of optics and pole spacing to create the amount of light needed, where it is needed. You could even include a Melli Sistema pole with multiple fixtures to aim light into larger areas while maintaining the design language of the space.



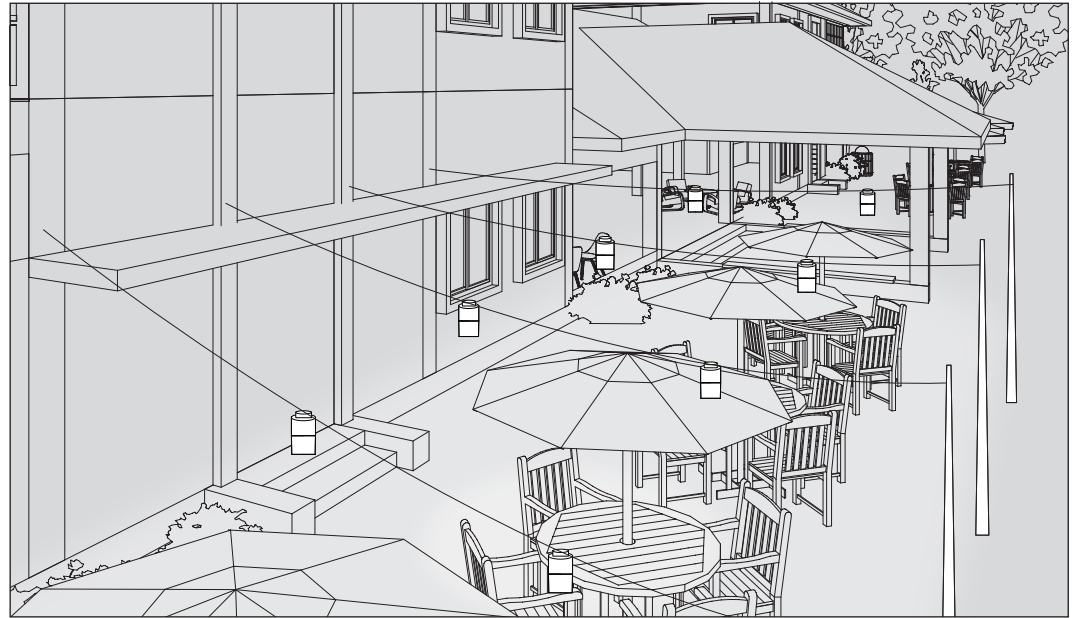
Facade Lighting

Use the wall mount Melli Spot with Direct or Direct/Indirect distributions to light up the sides of a building. A variety of distributions provide wide beams, or precise, dramatic lighting patterns. Melli Sistema Wall mount fixtures increase the coverage by allowing for adjustability and aiming the light.



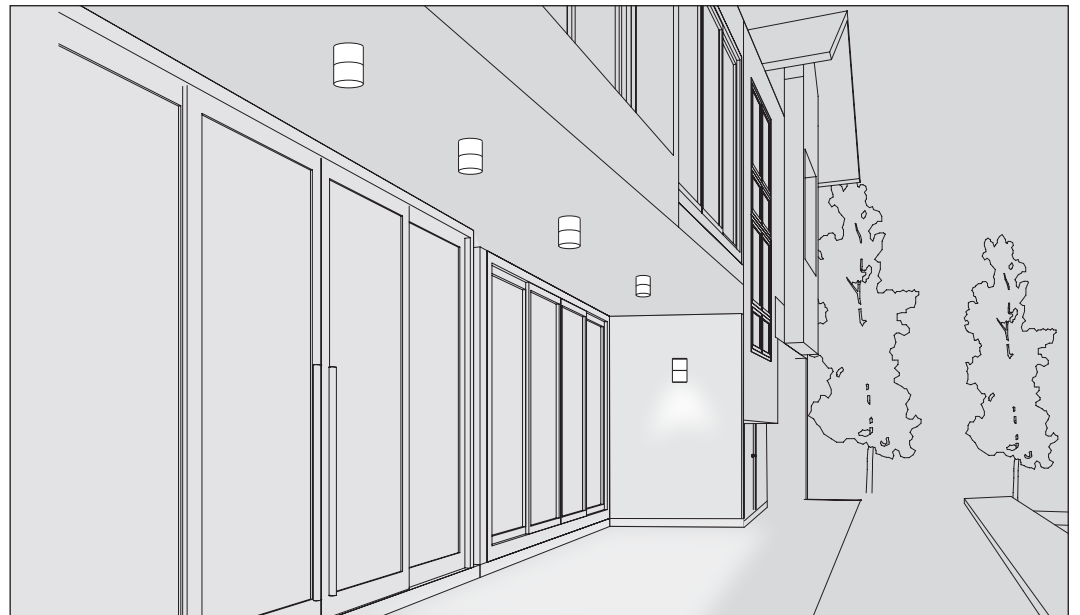
Catenary (Pole-to-Building)

Open up public spaces by removing typical lighting posts and using catenary mounted Melli. Hang the fixtures between poles or buildings - or a combination of both - it frees up space for walking or gathering, while still allowing comfortable and voluminous lighting.



Under Canopy

By mounting Melli under a canopy or in a passageway, you can bring a level of safety and welcome feeling to building exteriors and pathways.



Selux Metal Finishes

Tiger Drylac powder-coated finishes are available in standard colors. Melli is also available in Premium Colors from the Selux RAL book, or custom colors on a project-specific basis.

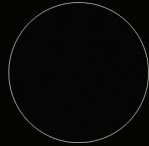
WH - white



BK - black



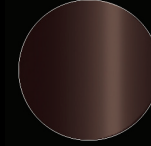
BL - semi-matte black



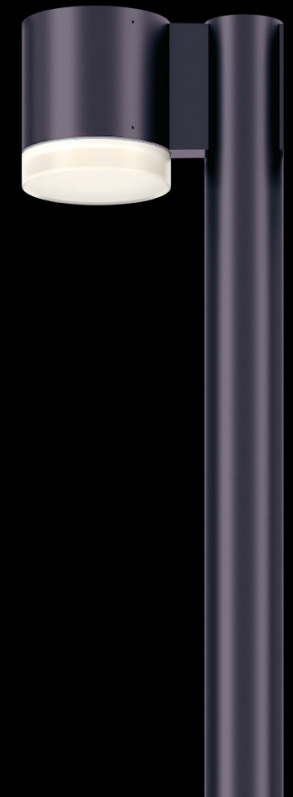
SV - silver



BZ - bronze



SP - premium color



Melli

When seeking a product prioritizing sustainability and the environment

Declare is a platform to share and find healthy building products. Manufacturers willingly disclose product information that can be found on the Declare labels. These labels are then accessible on a free and searchable database used by prominent designers, real estate owners and home owners, to specify products they know they can trust and that meet the requirements of leading green building standards, including Core Green Building, LBC, LEED, and WELL Certification.

Declare has positively changed the materials marketplace to enable the creation of buildings that support human and environmental health and has made it extremely easy to facilitate and simplify the exchange of information.

Selux is also proud to be Living Future Corporate Member. With this credential, Selux is recognized for its proficiency in the world's more ambitious, advanced, and holistic sustainable design standards.

You can trust that with these credentials, Melli by Selux supports a more sustainable future.

Declare.

Declare.

Melli Direct - Diffuse Selux Corporation

Final Assembly: Highland, New York, USA
Life Expectancy: 5+ Year(s)
End of Life Options: Recyclable (90%), Landfill (10%)

Ingredients:

Housing and Mounting Assembly: Aluminum; Stainless Steel; Verapamil; Copper; Rubber; Surge Protector¹; Silica Gel; Nylon 6/6; **LED Engine - Direct:** Aluminum; Stainless Steel; Silica Gel; LED PCB¹; Propylene Carbonate; **LED Driver:** LED Driver¹; **LED Geartray:** Aluminum; Surge Protector¹; Copper; Stainless Steel; Nylon 6; Nylon 6/6

¹LBC Temp Exception RL-002 - Small Electrical Components

Living Building Challenge Criteria: Compliant

I-13 Red List:

LBC Red List Free % Disclosed: 100% at 100ppm
 LBC Red List Approved VOC Content: Not Applicable
 Declared

I-10 Interior Performance: Not Applicable

I-14 Responsible Sourcing: Not Applicable

SLX-0002
EXP. 01 MAR 2024
Original Issue Date: 2023

MANUFACTURER RESPONSIBLE FOR LABEL ACCURACY
INTERNATIONAL LIVING FUTURE INSTITUTE™ living-future.org/declare

Declare.

Melli Sistema Selux Corporation

Final Assembly: Highland, New York, USA
Life Expectancy: 5+ Year(s)
End of Life Options: Recyclable (90%), Landfill (10%)

Ingredients:

Aluminum; Copper; LED Driver¹; Stainless Steel; Glass, oxide, chemicals; Silica Gel; Nylon 6; Nylon 6/6; Graphite

¹LBC Temp Exception RL-002 - Small Electrical Components

Living Building Challenge Criteria: Compliant

I-13 Red List:

LBC Red List Free % Disclosed: 100% at 100ppm
 LBC Red List Approved VOC Content: Not Applicable
 Declared

I-10 Interior Performance: Not Applicable

I-14 Responsible Sourcing: Not Applicable

SLX-0006
EXP. 01 APR 2026
Original Issue Date: 2025

MANUFACTURER RESPONSIBLE FOR LABEL ACCURACY
INTERNATIONAL LIVING FUTURE INSTITUTE™ living-future.org/declare

Publisher

Selux Corporation
5 Lumen Lane
Highland, NY 12528
www.selux.us

Edited by (responsible)

Selux Corporation

Concept and Design

Selux Corporation
www.selux.us

Print

Selux Corporation
5 Lumen Lane
Highland, NY 12528

Selux is a registered trademark of the Selux Corporation.
Errors accepted and subject to change due
to technical modifications. For conditions of sale
and delivery please refer to www.selux.us.

The use of the text and images, even in part, is
in breach of copyright without the consent of
the Selux Corporation and punishable. This also applies to
copies, translations, microfilming and processing
with electronic systems.

March 17, 2025 2:32 PM